



'Renaissance'

Cruising in France

CRUISE ITINERARIES

'Renaissance' cruises the lovely Canal de Briare in the Upper Loire, an all-canal route. Itineraries with special themes — such as cycling, family, walking, golf or wine appreciation — can be arranged for chartering parties with special interests.

All cruises are from Sunday through Saturday (six nights), with longer options available for chartering parties.

ON-BOARD ACCOMMODATIONS

Each of the four cabins on board 'Renaissance' can be configured as either king or twins, and each has a flat-screen television and DVD player. Each has a fully tiled en suite bathroom with teak flooring and offers shower gel, hand soap, shampoo and a hairdryer. Electrical current is 220V (standard European).

NUMBER OF GUESTS / CHILD POLICY

'Renaissance' is best suited for couples, individuals or chartering parties of eight persons. There is special pricing for less-than-capacity chartering parties of six or seven persons. Children over 12 are welcome on hotel sailings; children under 12 are welcome on charters.

MEALS DURING THE CRUISE

Gourmet dining is an integral part of the 'Renaissance' experience. Menus are inspired by the culinary traditions for which France is known, and meals are prepared using the freshest ingredients from local markets; on occasion, interested guests may accompany the chef to the market. The wines and cheeses served on board are specially selected to enhance the dining experience.

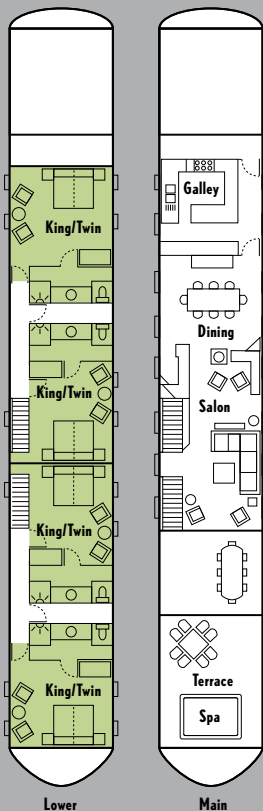
Breakfast and lunch are served buffet style, while a set menu is offered at dinner. Guests with specific food requests can generally be accommodated with advance notice. Weather permitting, there is also the possibility of *al fresco* meal service on the outdoor sun deck.



CRUISE PRICE INCLUSIONS & EXCLUSIONS

The cruise price includes on-board accommodations for six nights; all meals from dinner on day of embarkation through breakfast on day of disembarkation; all alcoholic and non-alcoholic beverages on board; fully-guided sightseeing excursions (as indicated on the day-by-day itinerary), including entrance fees; and transfers between Paris and the barge embarkation/ disembarkation points.

The cruise price does NOT include gratuities to crew, travel insurance or airfare.



BARGE SPECIFICS

- Staffed by 5 crew members, including an on-board chef
- Barge is 126 feet long and 16 feet wide, with air conditioning and central heating
- Salon and dining area are approximately 715 square feet in size, with a stereo system and assortment of CDs available for guests' enjoyment
- Sun deck is partially covered by a canopy, offering 385 square feet of additional living space, with *al fresco* dining possibilities and an 8-person hot tub
- Barge not handicap accessible and is appropriate for those with only minor mobility issues
- Eight touring bicycles available for guests' use
- Strict non-smoking policy in effect on all interior areas of the barge
- No guest telephone access on board but ample opportunities ashore
- Euros only form of payment accepted on board