

'Hirondelle'

THE LOIRE VALLEY AND BURGUNDY & FRANCHE-COMTÉ

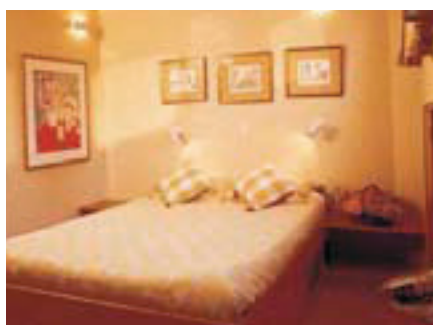
6 nights | Sunday departures | Hotel and charter sailings | Children under 16: charters only
Departs from the Paris hotel chosen by the charter group: Sunday, 12:30 pm



'Hirondelle,' a luxury product of **Orient-Express Hotels, Trains & Cruises**, expands her horizons in 2009 with April, May and August cruises in the château-filled Loire Valley. She returns to the charming countryside of Burgundy & Franche-Comté – her previous home – for the remainder of the season.

LOIRE VALLEY

Known as the garden of France, the Loire Valley is home to more than 300 historic châteaux. As the third-largest wine region in France, it is also known for its fruity white and refreshing rose varieties. Add in the many historic cities and villages, and the Loire offers an exceptional cultural experience.



Cozy cabin on board



BURGUNDY & FRANCHE-COMTÉ

Burgundy has a rich and diverse history — from the Paleolithic caves at Arcy-sur-Cure to the 17th-century Ducal Palace in Dijon to the world-famous vineyards that produce the region's most famous modern-day ambassador, there is something to captivate every interest.

Historically, the neighboring Franche-Comté was a divided and much-disputed land. Gaulish, Spanish and French influences have all made contributions to its special soul. Today, its scenic lakes, quiet villages and unspoiled villages patiently wait to charm visitors.

A&K RECOMMENDS ...

Extend your stay with pre- and post-cruise hotel nights. Contact A&K for details and pricing.

FOR LARGER GROUPS

'Hirondelle' can travel in tandem with 'Fleur de Lys' (pages 52 – 53) and 'Amaryllis' (pages 54 – 55) to accommodate larger groups.



Enjoying a glass of wine and the sunshine on board 'Hirondelle'

CRUISE ROUTES

Loire Valley

Rogny-les-Sept-Écluses and le Guétin
le Guétin and Digoin

Burgundy & Franche-Comté

Digoin and St-Léger-sur-Dheune
St-Léger-sur-Dheune and Besançon
Besançon and Dijon
Dijon and Escommes
St-Léger-sur-Dheune and Dijon
Escommes and St-Jean-de-Losne

Contact A&K for details. Other routes available upon request.



An elegant dinner table is set



A typical Burgundy countryside view

PRICE PER PERSON

Cruise arrangements

Apr 05 - Oct 31

Double occupancy	\$ 5,400
Single supplement	\$ 1,350
Six-night charter*	\$ 38,200

*Please ask about special prices for charters with 6 or 7 passengers.

Rail Transfers **

(for Loire Valley, Paris/Nevers/Paris; for Burgundy, Paris/Dijon/Paris) \$ 280

**For some cruise routes, train service to/from le Creusot may be used.

Please check with A&K for our special international airfares.

'HIRONDELLE'

Length: 128 feet | Width: 17 feet
Passengers: 8 | Crew: 4

CABINS

1 large double cabin, with en suite bathroom | 3 twin cabins, each with en suite bathroom | All outside facing

